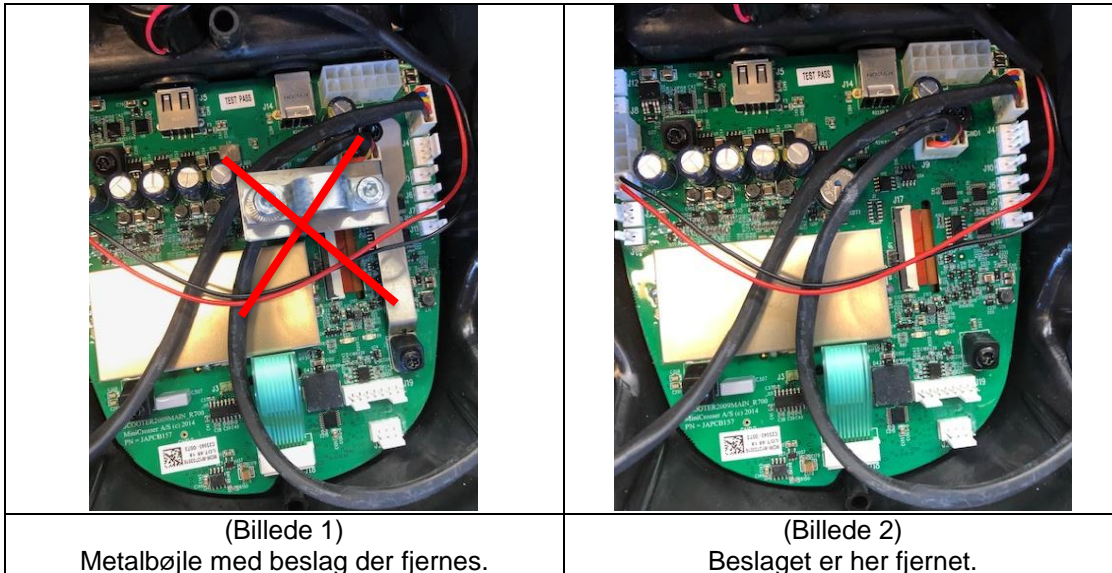


Vedr.:  M2/X2 – Brugerpanel	PUP nr.:	20-006
	Udarbejdet af:	KSM
	Dato:	16-06-2020
	Intern <input type="checkbox"/>	Ekstern <input checked="" type="checkbox"/>

## M2/X2 - brugerpanel

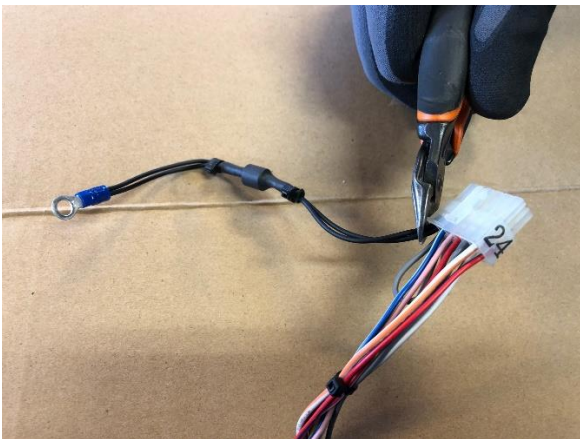
Fra og med X2 scooter med serienummer 03-49703-20-06 er metalstrømpen på hovedkablet ikke længere forbundet til metalbøjlen på brugerpanelet. Hele metalbøjlen med beslaget vil sågar være fjernet. Se billede 1 og 2.



Ved test i EMC-testkammer har vi fundet frem til, at vi stadig overholder EMC kravet på scooteren ved kun at have metalstrømpen forbundet til styringspladen bagerst på scooteren og ikke have den monteret i brugerpanelet.

Derfor fjernes denne del af installationen fremover.

Brugerpaneler der leveres som reservedel vil ej heller fremadrettet have metalbøjlen monteret. Er scooteren udstyret med spændingsudligner ved eftermontering af brugerpanel så fjernes denne. Se billede 3.



(Billede 3)

Ovenstående gælder både for M2 og X2 scootere.



Klaus Smedegaard  
R & D Manager

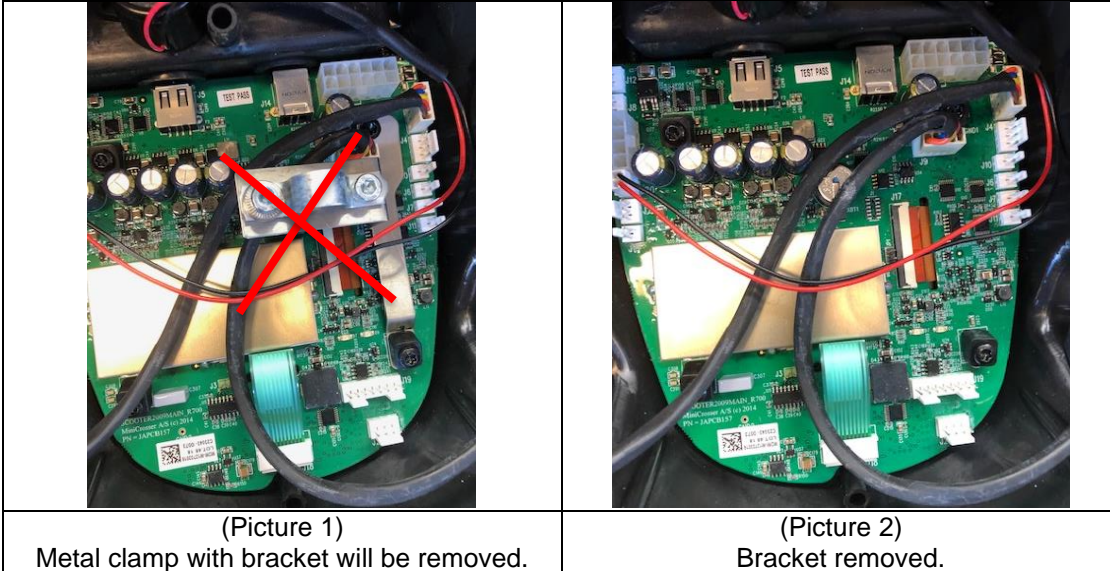



medemagruppen

Regarding:  M2/X2 – User panel	PUP No.:	20-006
	Prepared by:	KSM
	Date:	16-06-2020
	Internal <input type="checkbox"/>	External <input checked="" type="checkbox"/>

## M2/X2 Userpanel

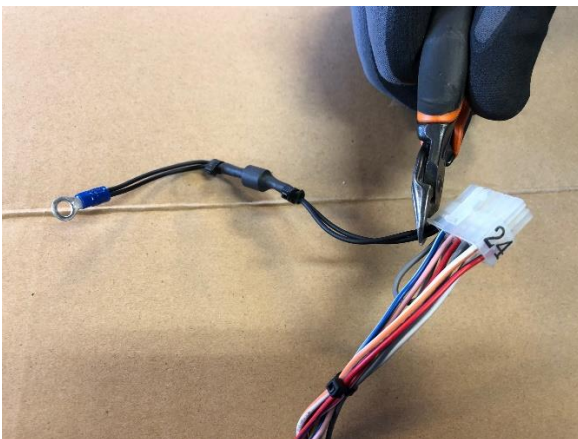
From and including X2 scooters with serial no. 03-49703-20-06 the metal sleeve on the main cable will no longer be connected to the metal clamp on the user panel. Infact the complete bracket will be removed. See picture 1 and 2.



By testing in EMC test chamber we have found we are still below the limit for EMC demand on the scooter, by only having the metal sleeve connected to the aluminium plate at the rear of the scooter and not having it mounted in the user panel.

Therefore it will be removed in all future installations.

User panels that are supplied as spare part will also have the bracket removed. Is the scooter equiped with voltage equalizer this has to be removed also. See picture 3.



(Picture 3)

The above goes for both M2 and X2 scooters.



**Klaus Smedegaard**  
R & D Manager

*Klaus Smedegaard*



medemagruppen